



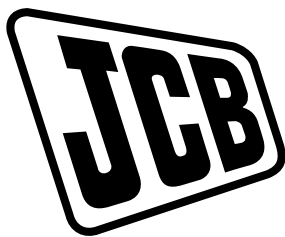
OPERATOR'S MANUAL



**BACKHOE LOADER
3CX, 4CX**

EN - 9831/8750 ISSUE 1 - 04/2018

THIS MANUAL SHOULD ALWAYS STAY WITH THE MACHINE



OPERATOR'S MANUAL

BACKHOE LOADER
3CX, 4CX

EN - 9831/8750 - ISSUE 1 - 04/2018

This manual contains original instructions, verified by the manufacturer (or their authorized representative).

Copyright 2018 © JCB SERVICE
All rights reserved. No part of this publication may be reproduced, stored in a retrieval system, or transmitted in any form or by any other means, electronic, mechanical, photocopying or otherwise, without prior permission from JCB SERVICE.

www.jcb.com

Foreword

The Operator's Manual



You and others can be killed or seriously injured if you operate or maintain the machine without first studying the Operator's Manual. You must understand and follow the instructions in the Operator's Manual. If you do not understand anything, ask your employer or JCB dealer to explain it.

Do not operate the machine without an Operator's Manual, or if there is anything on the machine you do not understand.

Treat the Operator's Manual as part of the machine. Keep it clean and in good condition. Replace the Operator's Manual immediately if it is lost, damaged or becomes unreadable.

Machine Delivery and Installation

Even if you have operated this type of equipment before, it is very important that your new machines operations and functions are explained to you by a JCB Dealer Representative following delivery of your new machine.

Following the installation you will know how to gain maximum productivity and performance from your new product.

Please contact your local JCB dealer if the Installation Form (included in this manual) has not yet been completed with you.

Your local JCB Dealer is



Contents	Page No.
Acronyms Glossary	ix
Introduction	
About this Manual	
Model and Serial Number	1
Using the Manual	1
Left-Hand Side, Right-Hand Side	1
Cab/Canopy	1
Cross References	1
Location of Manual	2
Safety	
Safety - Yours and Others	3
Safety Warnings	3
General Safety	4
Clothing and Personal Protective Equipment (PPE)	5
About the Product	
Introduction	
General	7
Name and Address of the Manufacturer	7
Product Compliance	7
Description	
General	8
Intended Use	8
Log Moving/Object Handling	8
Optional Equipment and Attachments	8
Danger Zone	8
Main Component Locations	8
Product and Component Identification	
Machine	10
Engine	10
Axle(s)	11
Gearbox	12
Operator Protective Structure	12
Safety Labels	
General	15
Safety Label Identification	15
Operator Station	
Component Locations	18
Interior Switches	
Ignition Switch	24
Multi-Purpose Switch	24
Cab Interior Light	25
Console Switches	
General	26
Road Lights	26
Rear Fog Lights	26
Hazard Warning Lights	26
Front Work Lights	27
Rear Work Lights	27



Four Wheel Drive Selector 27
Smooth Ride System (SRS) 27
Smooth Ride System with Hose Burst Check Valve 27
Beacon 28
Air-Conditioning 28
Window Heater 28
Lifting Warning System 28
Loader Quickhitch 28
Kingpost Clamp 28
Rear Window Wiper 28
Bi-Directional and Hammer Mode Selector 28
Hydraulic Flow Control 29
Return To Dig Enable 29
Handheld Hydraulic Tool Circuits 29
Hammer 29
Drinks Machine 29
Excavator/Loader Control Selector 29

Operation

Introduction
General 31
Operating Safety
General 32
Worksite Safety 34
Risk Assessment 35
Walk-Around Inspection
General 37
Entering and Leaving the Operator Station
General 38
Doors
Operator Door 39
Windows
Side Window 40
Rear Window 40
Battery Isolator
General 42
Before Starting the Engine
General 43
Operator Seat
General 45
Suspension Seat 45
Seat Belt
General 49
Inertia Reel Seat Belt 49
Static Seat Belt 50
Mirrors
General 52
Starting the Engine
General 53
Warming Up 54
Immobiliser 54



Stopping and Parking
General 58

Preparing for Travel
General 60
Preparing for Road Travel 61
Preparing for Worksite Travel 64
Beacon 65

Safety Equipment
Boom Lock 67
Slew Lock 68
Control Lock 69

Drive Controls
Steering Wheel 71
Steering Column 71
Accelerator Pedal 71
Hand Throttle Control 72
Service Brake Pedal 72
Park Brake 72
Transmission Drive Lever 73
Gear Lever 75
Transmission Kickdown Switch 75
Transmission Dump Switch 76
Steer Mode Control 76
Transmission Mode 79

Instruments
Instrument Panel 81
Speedometer 91

Getting the Machine Moving
General 93

Slopes
General 95
Driving on Slopes 95

Driving the Machine
Steer Modes 96
Limited Slip Differential (LSD) 96
TorqueLock 96

Operating Levers/Pedals
General 98
Control Layouts 98
Loader Controls 98
Excavator End Controls 110
Stabiliser Controls 132
Auxiliary Circuit Controls 135

Lifting and Loading
General 141
Lifting (Object Handling) Kit 141
Load Charts 142
Lifting Warning System 146

Working with the Loader
General 148
Filling the Shovel 149



Loading a Truck	150
Working with the Excavator End	
General	151
Preparing to Use the Excavator End	151
Lifting With the Excavator End	152
Digging	153
Changing the Bucket Linkage	154
Extending Dipper	157
Knuckle Boom	161
Heating, Ventilating and Air-Conditioning (HVAC)	
Air-Conditioning Controls	164
Cab Heater Controls	164
Face Level Fan	165
Extreme Cold Climate Heater	
General	166
Power Sockets	
Auxiliary Power Socket	173
Radio	
General	174
Cab Options	
Drinks Machine	175
Fire Extinguisher	
General	177
Moving a Disabled Machine	
General	178
Getting the Machine Unstuck	178
Jump-Starting the Engine	178
Retrieval	179
Loader Arm (Emergency Operation)	181
Excavator End (Emergency Operation)	181
Lifting the Machine	
General	182
Transporting the Machine	
General	186
Loading the Machine onto the Transporting Vehicle/Trailer	186
Operating Environment	
General	188
Operating in Low Temperatures	188
Operating in High Temperatures	188
Refuelling	
General	190
Low Fuel Levels	190
Filling the Tank	190
Attachments	
Working with Attachments	
Introduction	193
Attachments for your Machine	193
Connecting/Disconnecting Hydraulic Hoses	194
Direct-Mounted Attachments	
General	198

Tool Carrier	
General	199
Quickhitch	
General	202
Loader Quickhitch	202
Loader Quickhitch Carriage	203
Excavator End Quickhitch	204
Auxiliary Circuits	
General	217
Handheld Hydraulic Tool Circuits	217
Bi-directional Circuits	218
Shovels	
Shovel Forks	223
Street Pads	225
Side-Shift Carriage	
General	226
Hose Reel	
General	232
Work Platforms	
General	234
Hydraulic Thumb	
General	235
Hammer	
General	236
Preservation and Storage	
Cleaning	
General	239
Preparation	240
Checking For Damage	
General	241
Storage	
General	242
Put into Storage	242
During Storage	242
Take out of Storage	243
Security	
General	244
JCB Plantguard	244
LiveLink	244
Maintenance	
Introduction	
General	245
Owner/Operator Support	245
Service/Maintenance Agreements	246
Initial Service and Inspection	246
Obtaining Spare Parts	246
Maintenance Safety	
General	247
Fluids and Lubricants	248



Maintenance Schedules
General 252
How to Use the Maintenance Schedules 252
Maintenance Intervals 252
Pre-start Cold Checks, Service Points and Fluid Levels 253
Functional Tests and Final Inspection 256

Maintenance Positions
General 258
Maintenance Position - Loader Arm Lowered 258
Maintenance Position - Loader Arm Raised 258

Service Points
General 261

Access Apertures
General 263
Engine Compartment Cover 263
Front Grille 266

Tools
General 267
Toolbox 267

Lubrication
General 268
Preparation 268

Attachments
General 269

Body and Framework
General 272
Kingpost 274

Loader Arm
General 275

Excavator End
Lubricate 276
Wear Pads 277
Extending Dipper 278

Stabilisers
Wear Pads 280

Operator Station
General 282
Operator Protective Structure 282
Seat 283
Seat Belt 283
Controls 284

Engine
General 285
Oil 285
Drive Belt 288

Air Filter
General 290

Fuel System
General 292
Fuel Filter 293
Engine Fuel Filter 293



Water Separator 294

Cooling System

 General 295

 Coolant 295

 Cooling Pack 296

Brakes

 Park Brake 297

 Service Brake 298

Gearbox

 Oil 300

Steering System

 General 301

Axles

 General 302

Driveshafts

 General 304

Wheels

 General 305

Tyres

 General 307

Hydraulic System

 General 309

 Services 310

 Oil 310

 Cylinders / Rams 311

Electrical System

 General 312

 Battery 313

 Battery Isolator 316

 Fuses 316

 Relays 319

Window Washer

 Check (Level) 321

Technical Data

Static Dimensions

 Dimensions 323

 Weights 327

 Visibility Diagrams 329

Performance Dimensions

 Loader Arm Dimensions and Performance 342

 Excavator End Dimensions and Performance 345

 Excavator End Quickhitch Dimensions and Performance 349

 Driving Performance 349

Attachment Dimensions

 Safe Working Loads 350

 Excavator Bucket 352

 Loader Shovels 354

 Hydraulic Thumb 355

Noise Emissions

 General 357

 Noise Data 357



Vibration Emissions	
General	358
Vibration Data	358
Fluids, Lubricants and Capacities	
General	360
Fuel	361
Coolant	363
Torque Values	
General	365
Electrical System	
General	366
Bulbs	366
Fuses	366
Relays	372
Hydraulic System	
General	377
Hydraulic Hose Burst Pressures	377
Wheels and Tyres	
Tyre Sizes and Pressures	379
Declaration of Conformity	
General	381
Data	381
Warranty Information	
Service Record Sheet	383

Acronyms Glossary

2WD	Two Wheel Drive
2WS	Two Wheel Steer
4WD	Four Wheel Drive
4WS	Four Wheel Steer
AEC	Advanced Easy Controls
ARV	Auxiliary Relief Valve
AWS	All Wheel Steer
ECU	Electronic Control Unit
EHTMA	European Hydraulic Tool Manufacturers Association
ESOS	Engine Shut-Off Solenoid
FEAD	Front End Accessory Drive
FOPS	Falling Object Protective Structure
GPS	Global Positioning System
HBCV	Hose Burst Check Valve
HP	High Pressure
HVAC	Heating Ventilation Air Conditioning
ISO	International Organization for Standardization
LCD	Liquid Crystal Display
LED	Light Emitting Diode
LP	Low Pressure
LSD	Limited Slip Differential
MIL	Malfunction Indicator Lamp
MP	Medium Pressure
MRV	Main Relief Valve
PIN	Product Identification Number
PPE	Personal Protective Equipment
PWM	Pulse Width Modulation
RMS	Root Mean Square
ROPS	Roll-Over Protective Structure
RPM	Revolutions Per Minute
SAE	Society of Automotive Engineers
SRS	Smooth Ride System
SWL	Safe Working Load
km/h	kilometers per hour
mph	miles per hour



Notes:

Introduction

About this Manual

Model and Serial Number

This manual provides information for the following model(s) in the JCB machine range:

Model	From:	To:
3CX	2691366	
4CX	2691366	

Using the Manual

This operator's manual is arranged to give you a good understanding of the machine and its safe operation. It also contains maintenance and technical data.

Read this manual from the front to the back before you use the machine for the first time, even if you have used machines of a similar/same type before as the technical specification, systems and controls of the machine may have changed. Particular attention must be given to all the safety aspects of operating and maintaining the machine.

If there is anything you are not sure about, ask your JCB dealer or employer. Do not guess, you or others could be killed or seriously injured.

The general and specific warnings in this section are repeated throughout the manual. Read all the safety statements regularly, so you do not forget them. Remember that the best operators are the safest operators.

The illustrations in this manual are for guidance only. Where the machines are different, the text and or the illustration will specify.

The manufacturer's policy is one of continuous improvement. The right to change the specification of the machine without notice is reserved. No responsibility will be accepted for discrepancies which may occur between specifications of the machine and the descriptions contained in this manual.

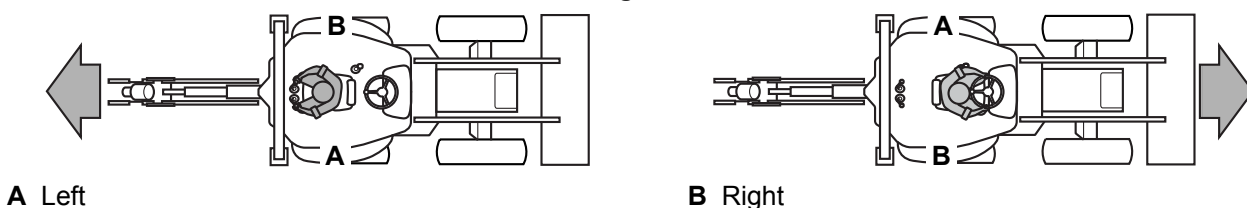
All of the optional equipment included in this manual may not be available in all territories

Left-Hand Side, Right-Hand Side

In this manual, 'left' and 'right' mean your left and right when you are seated correctly in the machine.

This is so whether you are facing the loader (front) or the backhoe (rear).

Figure 1.



Cab/Canopy

This manual frequently makes references to the cab. For example, 'do not operate the machine without an operator's manual in the cab'. These statements also apply to canopy build machines.

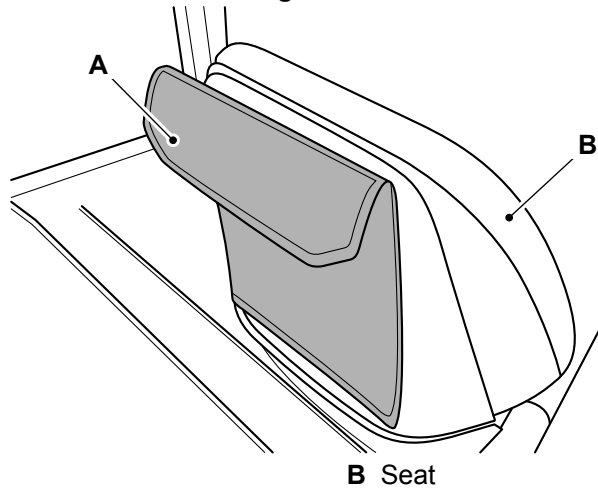
Cross References

In this manual, cross references are made by presenting the subject title in blue (electronic copy only). The number of the page upon which the subject begins is indicated within the brackets. For example: [Refer to: Cross References \(Page 1\)](#).

Location of Manual

The manual is located in the case attached to the back of the seat. The manual should always be returned to its case after use.

Figure 2.



A Manual location

B Seat

Safety

Safety - Yours and Others

All machinery can be hazardous. When a machine is correctly operated and maintained, it is a safe machine to work with. When it is carelessly operated or poorly maintained it can become a danger to you (the operator) and others.

In this manual and on the machine you will find warning messages, you must read and understand them. They inform you of potential hazards and how to avoid them. If you do not fully understand the warning messages, ask your employer or JCB dealer to explain them.

Safety is not just a matter of responding to the warnings. All the time you are working on or with the machine you must be thinking of what hazards there might be and how to avoid them.

Do not work with the machine until you are sure that you can control it.

Do not start any work until you are sure that you and those around you will be safe.

If you are not sure of anything, about the machine or the work, ask someone who knows. Do not assume anything.

Remember:

- Be careful
- Be alert
- Be safe.

Safety Warnings

In this manual there are safety notices. Each notice starts with a signal word. The signal word meanings are given below.

The signal word 'DANGER' indicates a hazardous situation which, if not avoided, will result in death or serious injury.

The signal word 'WARNING' indicates a hazardous situation which, if not avoided, could result in death or serious injury.

The signal word 'CAUTION' indicates a hazardous situation which, if not avoided, could result in minor or moderate injury.

The signal word 'Notice' indicates a hazardous situation which, if not avoided, could result in machine damage.

The safety alert system symbol (shown) also helps to identify important safety messages in this manual. When you see this symbol your safety is involved, carefully read the message that follows.

Figure 3. The safety alert system symbol



General Safety

Training

To operate the machine safely you must know the machine and have the skill to use it. You must abide by all relevant laws, health and safety regulations that apply to the country you are operating in. The operator's manual instructs you on the machine, its controls and its safe operation; it is not a training manual. Ensure that you receive the correct training before operating any machinery. Failing to do so will result in incorrect operation of the machine and you will be putting yourself and others at risk. In some markets, and for work on certain jobsites, you may be required to have been trained and assessed in accordance with an operator competence scheme. Make sure that you and your machine comply with relevant local laws and jobsite requirements – it is your responsibility.

Care and Alertness

All the time you are working with or on the machine, take care and stay alert. Always be careful. Always be alert for hazards.

Clothing

You can be injured if you do not wear the correct clothing. Loose clothing can get caught in the machinery. Keep cuffs fastened. Do not wear a necktie or scarf. Keep long hair restrained. Remove rings, watches and personal jewellery.

Alcohol and Drugs

It is extremely dangerous to operate machinery when under the influence of alcohol or drugs. Do not consume alcoholic drinks or take drugs before or while operating the machine or attachments. Be aware of medicines which can cause drowsiness.

Feeling Unwell

Do not attempt to operate the machine if you are feeling unwell. By doing so you could be a danger to yourself and those you work with.

Mobile Phones

Switch off your mobile phone before entering an area with a potentially explosive atmosphere. Sparks in such an area could cause an explosion or fire resulting in death or serious injury.

Switch off and do not use your mobile phone when refuelling the machine.

Lifting Equipment

You can be injured if you use incorrect or faulty lifting equipment. You must identify the weight of the item to be lifted then choose lifting equipment that is strong enough and suitable for the job. Make sure that lifting equipment is in good condition and complies with all local regulations.

Raised Equipment

Never walk or work under raised equipment unless it is supported by a mechanical device. Equipment which is supported only by a hydraulic device can drop and injure you if the hydraulic system fails or if the control is operated (even with the engine stopped).

Make sure that no-one goes near the machine while you install or remove the mechanical device.

Raised Machine

Never position yourself or any part of your body under a raised machine which is not correctly supported. If the machine moves unexpectedly you could become trapped and suffer serious injury or be killed.

Lightning

Lightning can kill you. Do not use the machine if there is lightning in your area.

Machine Modifications

This machine is manufactured in compliance with prevailing legislative requirements. It must not be altered in any way which could affect or invalidate its compliance. For advice consult your JCB dealer.

Clothing and Personal Protective Equipment (PPE)

Do not wear loose clothing or jewellery that can get caught on controls or moving parts. Wear protective clothing and personal safety equipment issued or called for by the job conditions, local regulations or as specified by your employer.



Notes:

About the Product

Introduction

General

Before you start using the machine, you must know how the machine operates. Use this part of the manual to identify each control lever, switch, gauge, button and pedal. Do not guess, if there is anything you do not understand, ask your JCB dealer.

Name and Address of the Manufacturer

Limited liability company JCB Russia. Trubnaya street, 12, office 1A, Moscow, 107045, Russian Federation

Product Compliance

Your JCB product was designed to comply with the laws and regulations applicable at the time of its manufacture for the market in which it was first sold. In many markets, laws and regulations exist that require the owner to maintain the product at a level of compliance relevant to the product when first produced. Even in the absence of defined requirements for the product owner, JCB recommend that the product compliance be maintained to ensure safety of the operator and exposed persons and to ensure the correct environmental performance. Your product must not be altered in any way which could affect or invalidate any of these requirements. For advice consult your JCB dealer.

For its compliance as a new product, your JCB and some of its components may bear approval numbers and marking's, and may have been supplied with a Declaration/Certificate of Conformity. These marking's and documents are relevant only for the country/region in which the product was first sold to the extent that the laws and regulations required them.

Re-sales and import/export of products across territories with different laws and regulations can cause new requirements to become relevant for which the product was not originally designed or specified. In some cases, pre owned products irrespective of their age are considered new for the purposes of compliance and may be required to meet the latest requirements which could present an insurmountable barrier to their sale/use.

Despite the presence of any compliance related marking's on the product and components, you should not assume that compliance in a new market will be possible. In many cases it is the person responsible for import of a pre owned product into a market that becomes responsible for compliance and who is also considered the manufacturer.

JCB may be unable to support any product compliance related enquiry for a product which has been moved out of the legislative country/region where it was first sold, and in particular where a product specification change or additional certification would have been required in order for the product to be in compliance.

Description

General

The Backhoe Loader is a self-propelled wheeled machine with a main frame designed to carry both front mounted equipment and rear mounted backhoe equipment with stabilisers.

Intended Use

The machine is intended to be used in normal conditions for the applications and in the environmental conditions as described in this manual. When used normally in the loader mode (shovel use), the machine loads through forward motion. A loader work cycle normally comprises filling, elevating, transporting and discharge of material. When used in the backhoe (excavator) mode, the machine is stationary and normally digs below ground level. A backhoe work cycle normally comprises excavating digging, elevating, swinging and discharging material.

Applications include earthmoving, road construction, building and construction, landscaping and similar applications.

The machine is not intended for use in mining and quarrying applications (other than for light yard clearing operations), in demolition activities, forestry, any use underground, or in any kind of explosive atmosphere.

A backhoe loader can also be used for object or material handling/transportation if it is suitably equipped with relevant parts, systems and attachments. [Refer to: Lifting and Loading \(Page 141\)](#).

If the machine is to be used in applications where there is a high silica concentration, risk due to materials containing asbestos or similar hazards, additional protective measures such as the use of PPE (Personal Protective Equipment) may be required.

The machine should not be operated by any person who does not have an appropriate level of qualification, training or experience of use of this type of machine.

Prior to use of the machine, its suitability (size, performance, specification etc.) should be considered with regards to the intended application and any relevant hazards that may exist. Contact your JCB dealer for support in determining the appropriate JCB machine, attachment and any optional equipment that is suitable for the application and environment.

Log Moving/Object Handling

Do not use the machine to move or handle logs unless sufficient log protection is installed. You could cause serious injury to yourself and damage to the machine. For more information, contact your JCB dealer.

Optional Equipment and Attachments

A wide range of optional attachments are available to increase the versatility of your machine. Only the JCB approved attachments are recommended for use with your machine. Contact your JCB dealer for the full list of approved attachments available.

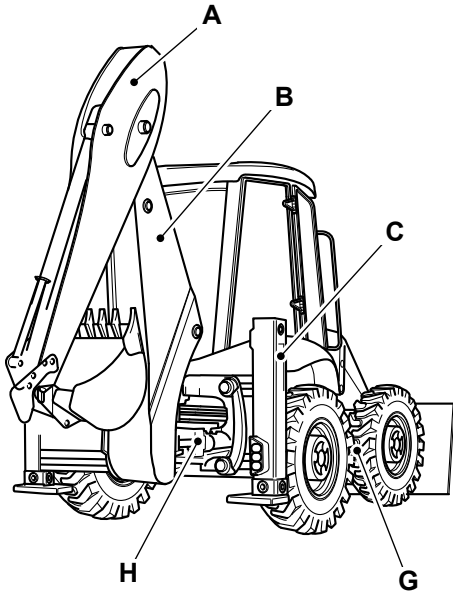
Danger Zone

The danger zone is any zone within and/or around the machinery in which a person is subject to a risk to their health or safety. During operation of the machine, keep all persons out of the danger zone. Persons in the danger zone could be injured.

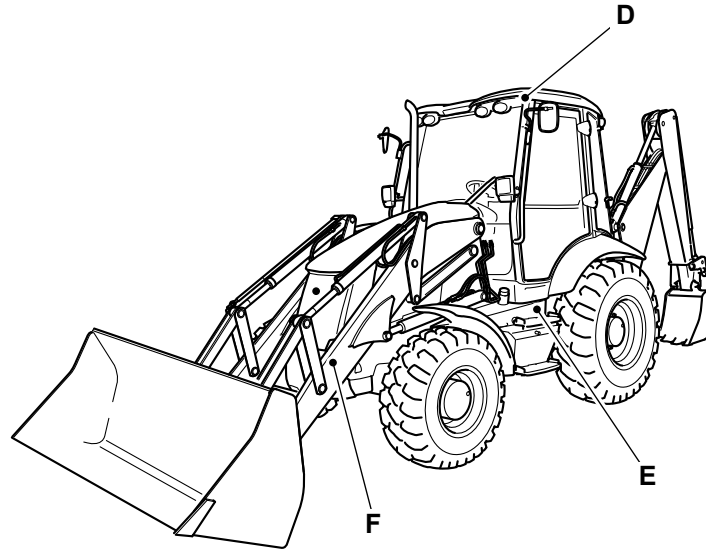
Before you do a maintenance task, make the product safe. [Refer to: Maintenance Positions \(Page 258\)](#).

Main Component Locations

Figure 4.



- A Dipper
- C Stabilisers
- E Hydraulic oil tank
- G Fuel tank



- B Boom
- D ROPS (Roll-Over Protective Structure)/FOPS (Falling Object Protective Structure) cab
- F Loader arm
- H Kingpost

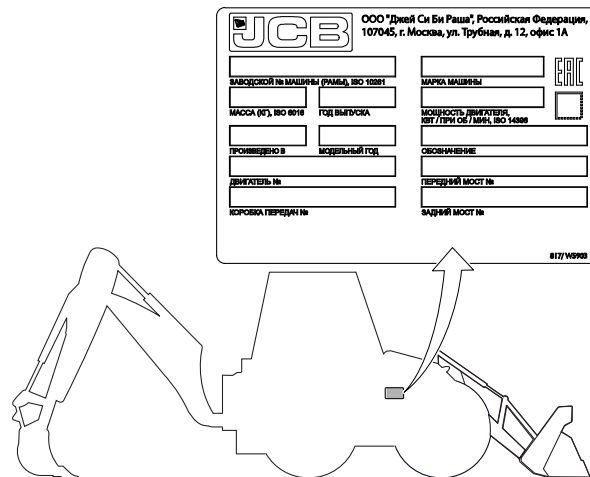
Product and Component Identification

Machine

Your machine has an identification plate. The serial numbers of the machine and its major components are marked on the plate.

The serial number of each major unit is also shown on the unit itself. If a major unit is replaced by a new one, the serial number on the identification plate will be wrong. Either get a replacement identification plate from your JCB dealer or simply remove the old number. This will prevent the wrong unit number being quoted when replacement parts are ordered.

Figure 5.



The machine model and build specification are indicated by the PIN (Product Identification Number). The PIN has 17 digits and must be read from left to right.

Table 1. Typical PIN

MOS	3CXPC	C	12345678
-----	-------	---	----------

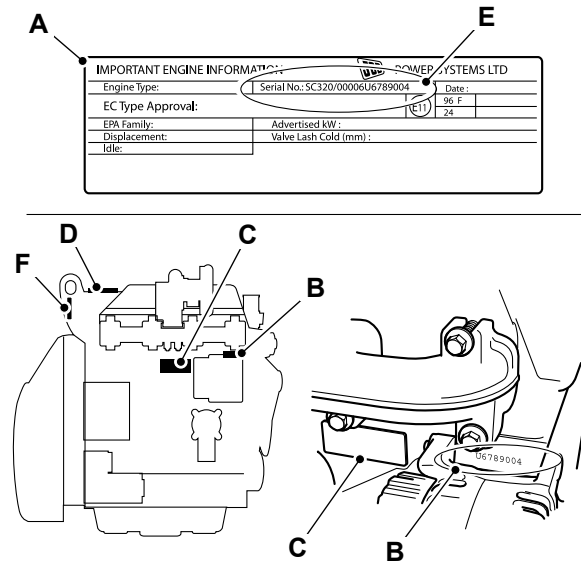
Table 2. Explanation of the PIN

Digit	Description
1 to 3	World manufacturer identification. For example, MOS = Moscow, Russia Build.
4 to 8	Machine type and model.
9	Randomly Generated Check Letter. The check letter is used to verify the authenticity of a machine's PIN.
10 to 17	Machine serial number. Each machine has a unique serial number.

Engine

Engine data labels are located on the cylinder block and rocker cover (if fitted). The data label contains important engine information and includes the engine identification number. Injector codes are on a label on the rocker cover.

Figure 6.



- | | |
|---|---|
| <p>A Engine data label
 C Engine data label - cylinder block
 E Engine identification number</p> | <p>B Stamp - cylinder block
 D Engine data label - rocker cover
 F Injector codes label - rocker cover</p> |
|---|---|

The data label includes the engine identification number.

Table 3. Example of the engine identification number

	SD	320/40001	U	00001	04
Digit	1-2	3-10	11	12-16	17-18

Table 4.

Digit 1-2	Engine Type
SA	4.4 L Naturally aspirated (Tier 2)
SB	4.4 L turbocharged mechanical fuel injection (Tier 2)
SC	4.4 L turbocharged and aftercooled mechanical fuel injection (Tier 2)
SD	4.4 L turbocharged mechanical fuel injection (Tier 3)
SF	4.4 L turbocharged and aftercooled mechanical fuel injection (Tier 3)

Table 5. Explanation of the engine identification number

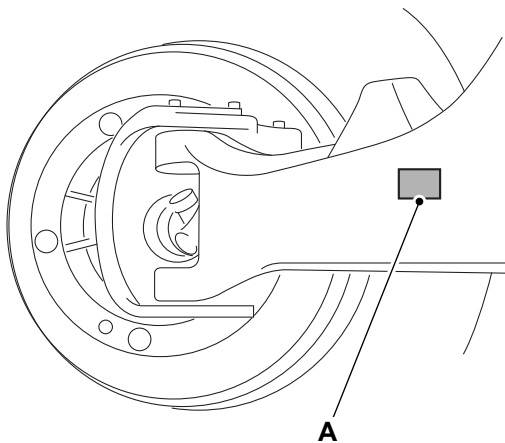
Digit	Explanation
3-10	Engine part number
11	Country of manufacture. U = United Kingdom
12-16	Engine serial number
17-18	Year of manufacture

The country of manufacturer, engine serial number and year of manufacture of the engine are also stamped on the cylinder block. Refer to Figure 6.

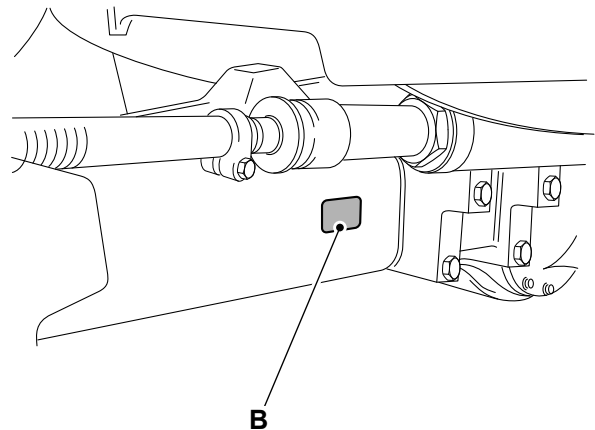
Axle(s)

The axles have a serial number stamped on a data plate as shown.

Figure 7.

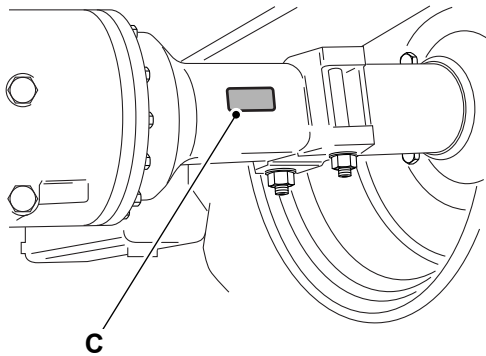


A Data plate - front axle (2WS machine)

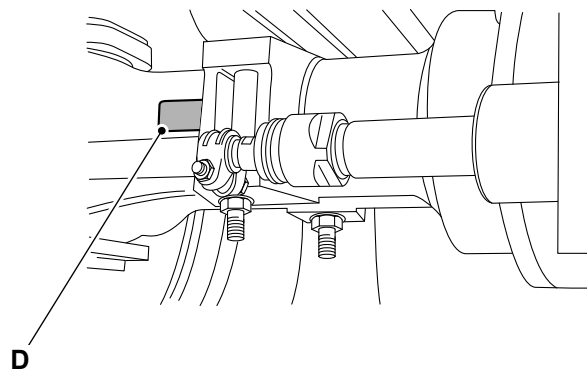


B Data plate - front axle (4WS machine)

Figure 8.



C Data plate - rear axle (2WS machine)

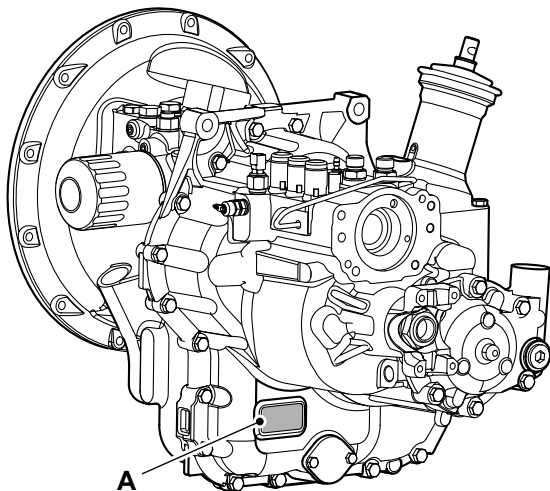


D Data plate - rear axle (4WS machine)

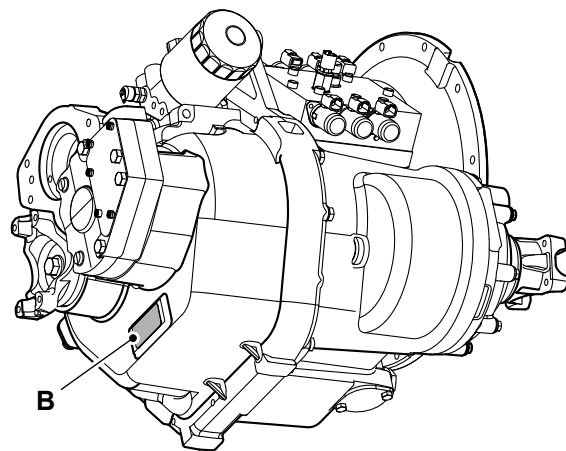
Gearbox

The gearbox has a serial number stamped on a data plate as shown.

Figure 9.



A Data plate- Synchro shuttle transmission



B Data plate- Powershift transmission

Operator Protective Structure

▲ WARNING Do not use the machine if the falling objects protection level provided by the structure is not sufficient for the application. Falling objects can cause serious injury.

Machines built to ROPS (Roll-Over Protective Structure)/FOPS (Falling Object Protective Structure) standards have an identification label installed to the left hand side of the bulkhead. Refer to Figure 10.

The FOPS structure provides Level II impact protection against falling objects (as defined in ISO (International Organization for Standardization) 3449:2005).

If the machine is used in any application where there is a risk of falling objects then a FOPS must be installed. For further information contact your JCB dealer.

The FOPS is installed with a data plate. The data plate indicates what level protection the structure provides.

There are two levels of FOPS:

- Level I Impact Protection- impact strength for protection from small falling objects (e.g. bricks, small concrete blocks, hand tools) encountered in operations such as highway maintenance, landscaping and other construction site services.
- Level II Impact Protection- impact strength for protection from heavy falling objects (e.g. trees, rocks) for machines involved in site clearing, overhead demolition or forestry.

Figure 10. ROPS/FOPS Data Plate Location for Cab/Canopy

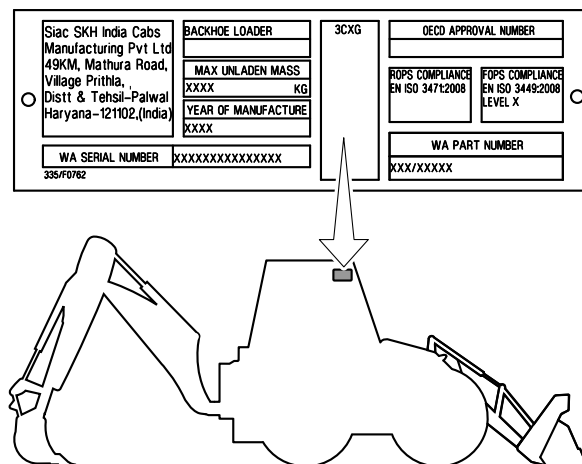
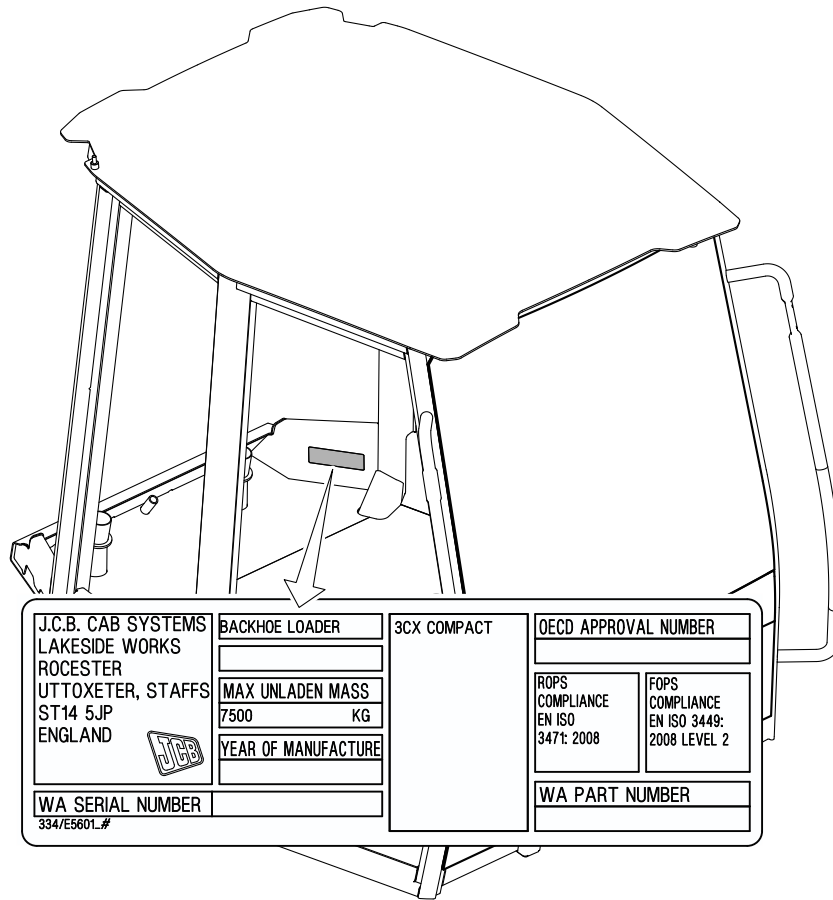


Figure 11. ROPS/FOPS Data Plate Location for Canopy - 3CX Compact



Safety Labels

General

▲ **WARNING** Safety labels on the machine warn you of particular hazards. You can be injured if you do not obey the safety instructions shown.

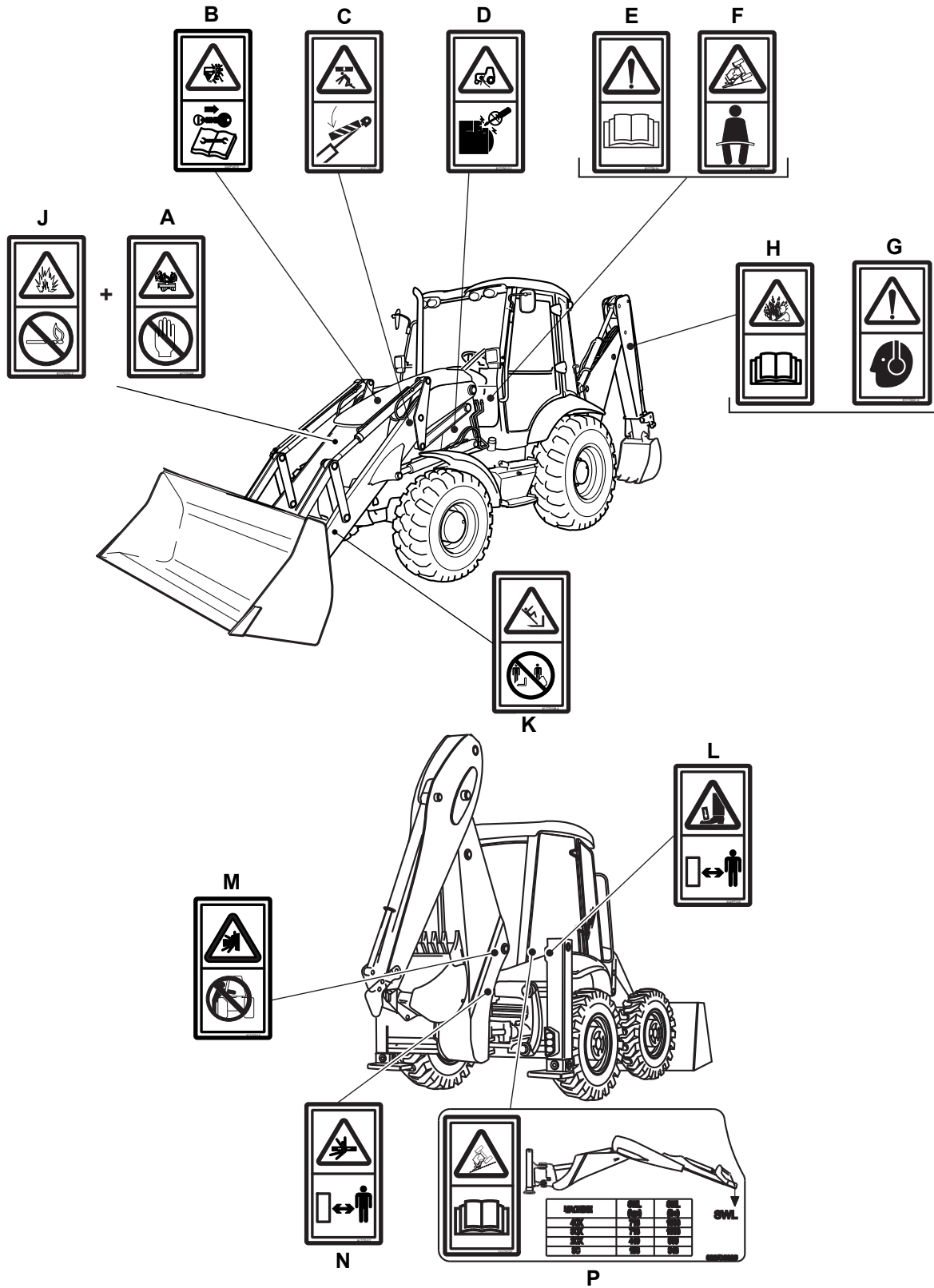
The safety labels are strategically placed around the machine to remind you of possible hazards.

If you need eye-glasses for reading, make sure you wear them when reading the safety labels. Do not overstretch or put yourself in dangerous positions to read the safety labels. If you do not understand the hazard shown on the safety label, then refer to Safety Label Identification.

Keep all of the safety labels clean and readable. Replace a lost or damaged safety label. Make sure the replacement parts include the safety labels where necessary. Each safety label has a part number printed on it, use this number to order a new safety label from your JCB dealer.

Safety Label Identification

Figure 12.



In addition to the safety labels detailed below a load chart decal 'P' may be installed on your machine. [Refer to: Load Charts \(Page 142\).](#)

Table 6. Safety Labels

Item	Part No.	Description	Qty.
A	817/70005	Hot fluid under pressure. Do not touch, consult operator's manual.	1
B	332/P4679	Warning. Severing of hands and fingers. Keep clear of/do not reach into rotating parts. Read the Service Manual.	1
C	817/70104	Crushing of whole body. Insert the boom support device before you complete any service or maintenance work underneath the boom.	1
D	817/70012	Run over hazard. Start the engine from the operator's seat only. Do not short across the terminals.	1
E	817/70014	Warning. Read the Operator's Manual before you operate the machine.	1
F	817/70029	Warning. Crush hazard. Wear seat belt.	1
G	817/70021	Noise warning. Wear ear protection.	1
H	332/F5855	Warning. Pressure hazard. Read the Operator's Manual.	1
J	817/70042	Explosion hazard. Remove sources of ignition.	1
K	817/70108	Fall from raised attachment. Do not stand or ride on the bucket or forks.	1
L	332/P7135	Crush hazard (to feet). Keep a safe distance. The attachment may roll forward when released.	1
M	817/70018	Warning. Crushing of whole body. Do not operate the controls from outside of the machine.	1
N	817/70112	Warning. Crushing of whole body. Keep a safe distance.	1

This as a preview PDF file from best-manuals.com



Download full PDF manual at best-manuals.com