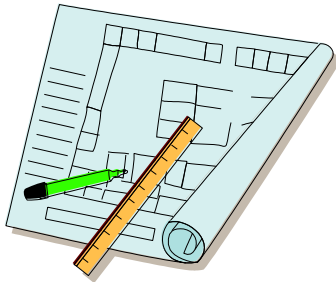

Technical Documentation Special Version



Spare parts list / Maintenance instructions

Customer: AEL
Order-no.: 722930
Hydac-Kom.-no.: 8306160847

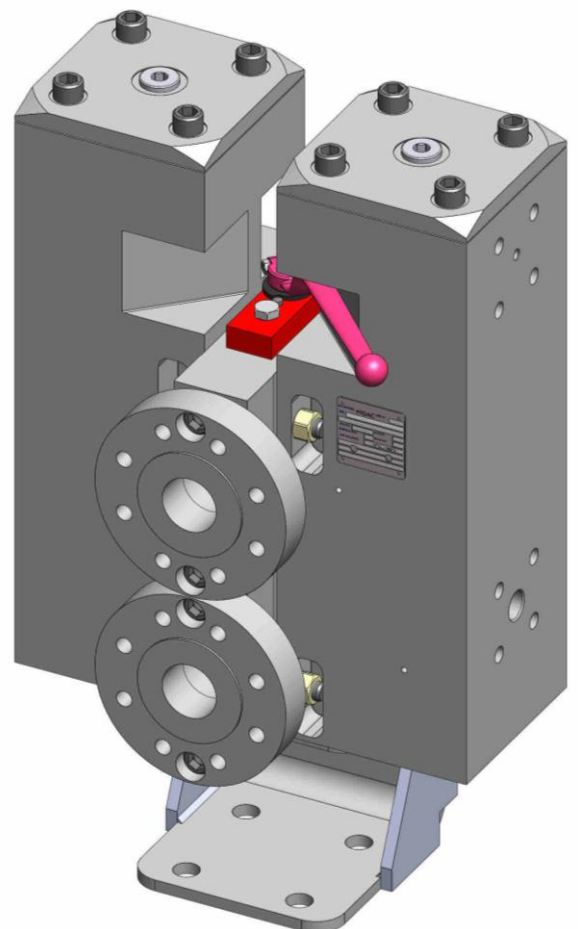
Filter type: AFLD G/HC 542 ZA3 10 W 1.0 /-Z-2GC-SFREE-300-03803694
Material-no.: 01309371

The warranty offered pursuant to our Terms of Sale and Delivery is applicable only in the event that original HYDAC components are used and work is carried out solely by properly trained and qualified personnel.

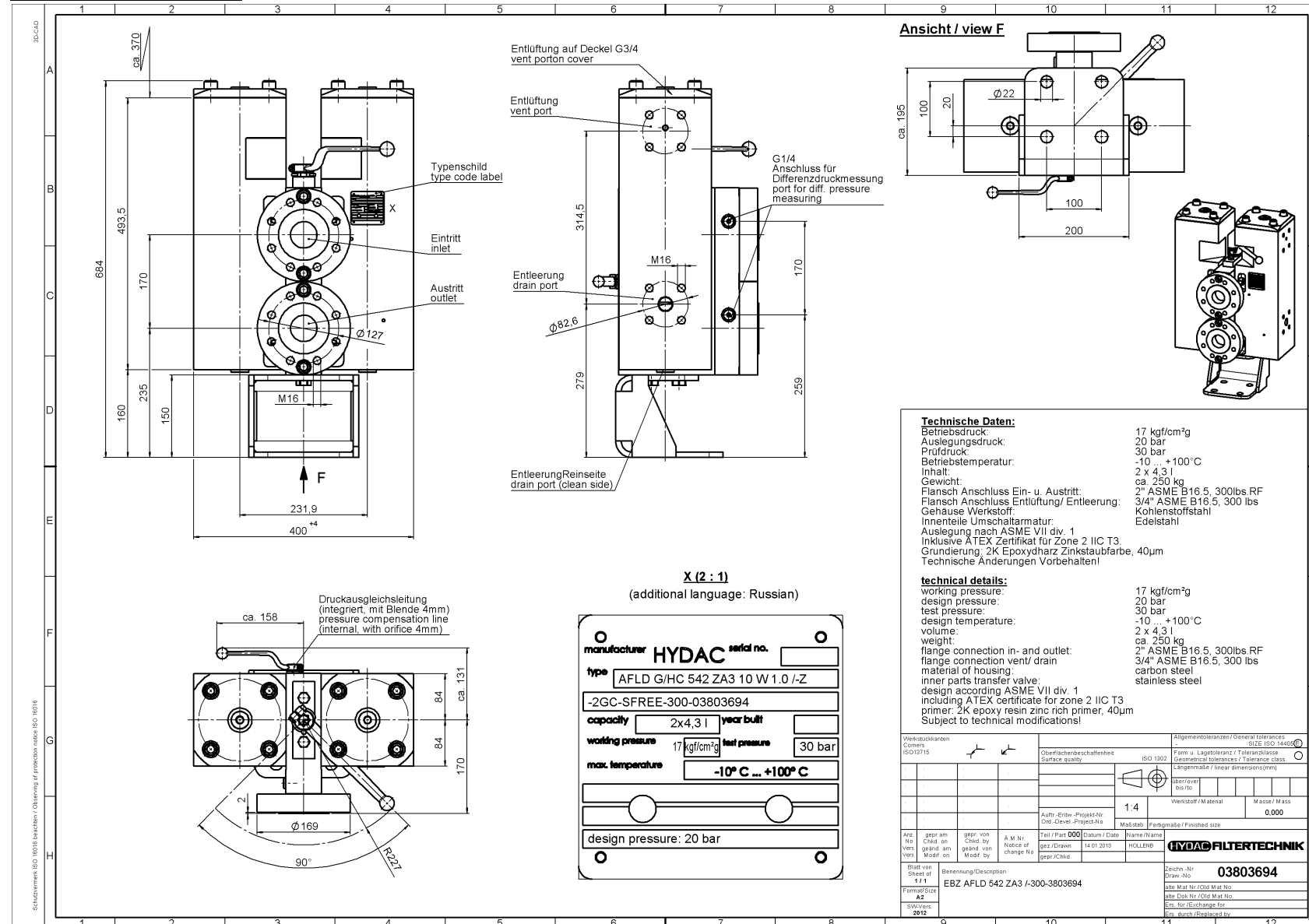
CONTENTS

Dimensional drawing

1. **Preliminary Remarks**
 - 1.1 Instructions for Use of Filter
 - 1.2 Installation
 - 1.3 Commissioning the Filter
 - 1.4 Required tool for maintenance works
2. **Maintenance instructions**
 - 2.1 General
 - 2.2 Maintenance measures
 - 2.3 Filter element changing frequency
3. **Changing the Filter Element**
 - 3.1 Removing the Filter Element
 - 3.2 Fitting the Filter Element
4. **Spare parts**
 - 4.1 Spare parts drawing
 - 4.2 Spare parts list



Dimensional drawing



1. PRELIMINARY REMARKS

1.1 Instructions for Use of Filter



Hinweis

This pressure vessel must only be commissioned in conjunction with a machine or system.



Hinweis

Under the provisions the pressure vessel must only be used according to the operating instructions of the machine or system.



Hinweis

This pressure unit has to be used with hydraulic- or lubrication fluid only.



Achtung

The user must ensure appropriate actions to avoid air formation (e.g. venting)



Achtung

Repairs, maintenance and commissioning must only be carried out by specialist staff. Do not touch the pressure vessel until cool. Carry out the directions in the operating instructions of the machine or system.



Gefahr

Attention pressure vessel: please ensure for all works at the pressure vessel that the referring side of the pressure vessel (filter housing) is released of pressure.



Gefahr

No modifications may be made to the pressure vessel (welding, drilling, forced opening..).



Hinweis

The operator/owner is to ensure adherence to the National Water Resources Act as well as local water resources laws and other related regulations.



Achtung

Adherence is to be maintained to statutory accident prevention regulations, safety regulations and safety data sheets for fluids.



Achtung

When working directly on or in the vicinity of hydraulic systems, there is to be no smoking or open flames/fire, with every effort being taken to prevent the generation of sparks.



Achtung

Hydraulic media and water-polluting fluids must not be allowed to soak into the soil, seep into bodies of water or the sewage system. Ensure that hydraulic media and fluids are disposed of in an environmentally safe manner. Adherence is to be maintained to pertinent national and local regulations pertaining to groundwater protection, disposal of waste/spent oil and (hazardous) waste.



Achtung

Work on filters may involve leaking hot oil which may cause injury and scalding as result of its high pressure and/or temperature.



Achtung

Filter housings must be grounded.

1.2 Installation

Before installing the filter in the hydraulic system check to see whether the permissible operating pressure of the system corresponds to the value indicated on the rating plate.

It is to be made certain, that the filter is fastened without tension and no piping forces will transfer to the filter.

With the attachment, system forces at the filter must be excluded. Fasten the filter with stand device to the background only if a compensator, an extension loop, a dampens element or similar were built into the piping.

1.3 Commissioning

Make sure that the designated filter elements (1) have been installed. Set the cover plate on top and tighten the cover plate screws using the proper torque.

Turn the lever (3) of the pressure compensation line, move the control lever (2) to the middle position and fill the filter unit via the system (both sides of the filter are to be filled).

Vent the filter by loosening the air bleeding screws (A) on the cover plates. Then move the control lever (2) to either of the filter sides and reclose the lever (3) of the pressure compensation line. Close the air bleeding screws. Check filter for leakage.

1.4 Required tool for maintenance works

	Cover plate screws	Ext. hex.	Torque rating
Size	ISO 4762	SW	
AFLD 332	M16 x 35	24	150 Nm

2. MAINTENANCE INSTRUCTIONS

2.1 General

This section contains a description of the periodical maintenance work to be performed. The operability, operational reliability and serviceable life of the filter essentially depend on regular careful maintenance.

2.2 Maintenance Measures

- Spare parts are to conform to the technical requirements specified by the manufacturer. This is always ensured when using original HYDAC spare parts.
- Keep tools, working area and equipment clean.
- After dismantling the filter clean all components, check for damage or wear, and replace, if necessary.
- When replacing a filter element make sure that everything is kept as clean and dirt-free as possible in order to prevent the filter from being contaminated.

2.3 Filter Element Changing Frequency

We recommend that the filter elements are changed at pre-defined intervals, however at least once a year.

If no clogging indicator is fitted, we recommend that the filter elements are changed at pre-defined intervals, however at least once a year (the element change frequency depends on the filter design and the conditions to which the filter is subjected). When the filter element is subjected to high dynamic loading it may prove necessary to change the element more frequently. The same applies to commissioning, repair work, oil changes etc. in the hydraulic system.

3. Changing the Filter Element

3.1 Removing the Filter Element

1. Turn the lever (3) of the pressure compensation line in order to enable pressure equalization between the filter housings. Turn the change-over lever (2) by 90° degrees ⇒ the filter is now changed over to the other side. Close the lever (3) again.
2. Loosen the air vent screw (A) on the filter side currently not in operation in order to release the pressure. Open the oil drain screw (B) on the filter side currently not in operation and drain the contaminated oil into a suitable receptacle. (The oil shall not be used for re-filling unless having been properly filtered/purified first).
3. Open the cover plate screws and lift up the cover.
4. Pull out the filter element (1) by the stirrup (examine the surface of the filter element for contamination residue and large-sized particles. This may be an indication of damage at components).
5. Remove filter element.
6. Clean the housing and the cover plate, if necessary.
7. Check the filter for mechanical damage/wear, paying special attention to the sealing surfaces.
8. Check the O-Rings and if necessary, change them.

3.2 Installing the Filter Element

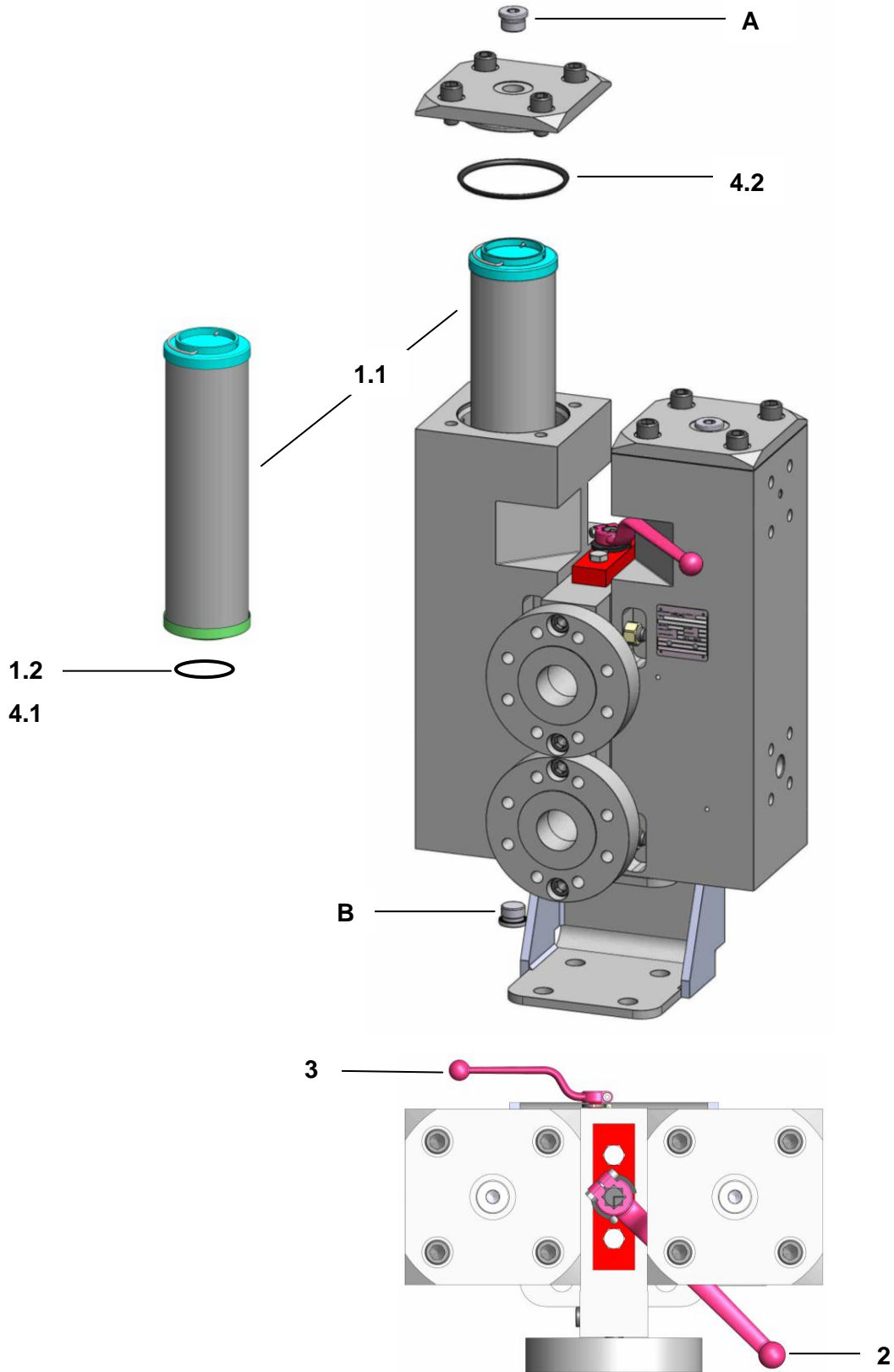
1. Wet the sealing surfaces on the filter housing and the cover plate including the seals with clean hydraulic medium.
2. When installing a new filter element check whether the designation of the new filter element corresponds to that of the old one.
3. Wet the o-rings of the new elements with clean hydraulic fluid.
4. Carefully mount the filter element (1) on the element spigot in the housing (check the position of the stirrup on the element).
5. Set the cover plate on top and screw in the cover screws by hand; tighten them by tightening the screws in opposite corners.
6. Close the oil drain screw (B).
7. Turn the lever (3) of the filling line and fill the filter side until oil exits the air vent screw (A).
8. Close the air vent screw (A).
9. Close the lever (3) of the filling line and check the filter for leakage.

Note:

Filter elements which cannot be cleaned are to be disposed of in an environmentally safe manner in accordance with environmental protection regulations.

4. Spare Parts

4.1 Spare parts drawing AFLD G/HC 542 ZA3 10 W 1.0 /-Z-2GC-SFREE-300-03803694



4.2 Spare parts list AFLD G/HC 542 ZA3 10 W 1.0 /-Z-2GC-SFREE-300-03803694

Item	Cons. of	Designation	Qte.	AFLD 542 ZA3
1.		Filter element 0540 A 010 G/HC /-SFREE	2	01301396
	1.1	Filter element	2	0540 A...
	1.2	O-ring	2	53,57 x 3,53
2.		Change-over lever SK SW17	1	00273662
3.		Change-over lever SK SW09	1	00388657
4.		Seal kit-E AFLD.542 F 1.0	1	01304010
	4.1	O-ring (Filter element)	2	53,57x 3,53
	4.2	O-ring (cover plate)	2	110,5 x 5,33

Other spare parts on request.

NOTE:

The information in this brochure relates to the operating conditions and applications described. For applications or operating conditions not described, please contact the relevant technical department. Subject to technical modifications.

Customer Information in respect of Machinery Directive 2006/42/EC

Hydraulic filters are defined as fluid power parts / components and are therefore excluded from the scope of the EC Machinery Directive, sections 1.4.1 - 1.4.3. They will not bear the CE mark!

Before using these components, ensure compliance with the specifications provided by HYDAC FILTERTECHNIK. The specifications also contain information on the relevant essential health and safety requirements (based on Machinery Directive 2006/42/EC).

We hereby declare that the filters are intended to be incorporated into machinery within the meaning of the Directive 2006/42/EC.

It is prohibited to put the filter into service until the machinery as a whole is in conformity with the provisions of the Machinery Directive.

Service Addresses

HYDAC Service GmbH
D-66273 Sulzbach / Saar
Postfach 1251

Plant adresse:

D-66540 Neunkirchen / Saar
Friedrichsthaler Straße 15
Tel.: +49 (0) 6897 / 509-333
Fax.: +49 (0) 6897 / 509-846

ServiCenter:

Tel.: +49 (0)6897 / 509-412
Fax.: +49 (0)6897 / 509-634

Customer service:

Tel: +49 (0)6897 / 509-1478
Fax: +49 (0)6897 / 509-423