

Sequence and Unloading Valves

VDP 06/NC

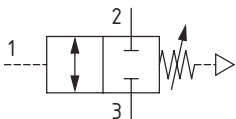
Sequence Valve, Normally Closed, Spool Type, Hydraulic Pilot, Atmospheric Vent

315 bar [4600 psi] • 25 l/min [7 US gpm]

DESCRIPTION AND OPERATION

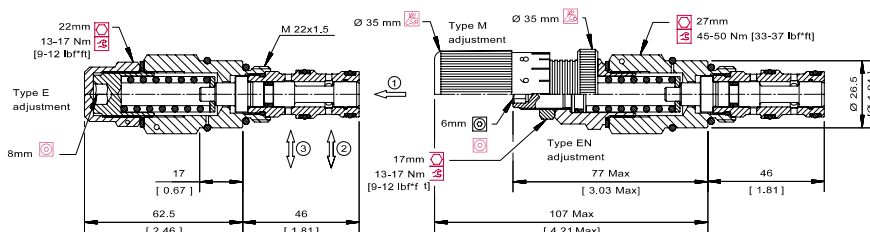
This is a hydraulically pilot operated spool valve, normally closed from port 2 to 3 with an atmospheric vent. When the pilot pressure on port 1 reaches the setting, the valve will begin to open port 2 to 3. This is ideal for sensing pressure in a remote area of a circuit to sequence another operation.

SCHEMATIC



DIMENSIONS

mm [in]

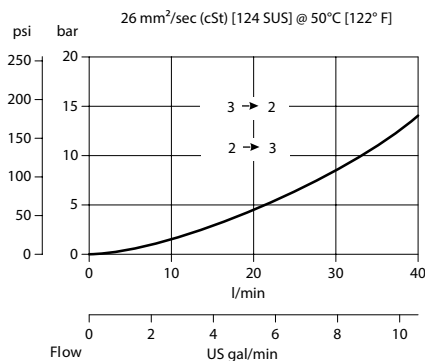


PERFORMANCE DATA

Rated pressure	315 bar [4600 psi]
Rated flow @ 7 bar [100 psi]	25 l/min [7 US gpm]
Weight	0.26 kg [0.57 lb]
Cavity	NCS 06/3

PERFORMANCE CURVES

Pressure Drop



MODEL CODE

VDP 06 /NC - EN - 2 - 00 - V - 60

Adjustment Option

E - Internal
EN - External
M - Calibrated Knob

Pressure Range

Code	Bar	Psi
1	15-40	[220-580]
Standard Setting		Not set
2	30-120	[435-1740]
Standard Setting		Not set
3	105-190	[1520-2750]
Standard Setting		Not set

Pressure Setting

Code - Pressure setting in bar (5 bar increments within specified Pressure Range)
XXX - Standard setting (see Pressure Range for value)

Example:

Code	Bar	Psi
60	60	[870]

Seal Option

Code	Seal kit
V - Viton	230000059
Omit - Buna - N	230000430

Housing

Code	Ports & Material	Housing Model Code
00	No Housing	No Housing
SE3/8	AL, 3/8 BSP	NCS06/3-SE-3/8
SE1/2	AL, 1/2 BSP	NCS06/3-SE-1/2
SE6S	AL, #6 SAE	NCS06/3-SE-6S
SE8S	AL, #8 SAE	NCS06/3-SE-8S

* Aluminum bodies are to be used for pressures less than 210 bar [3000 psi].
* Additional housings available